

## Press-On Bands

### MH20 and ContiPT18

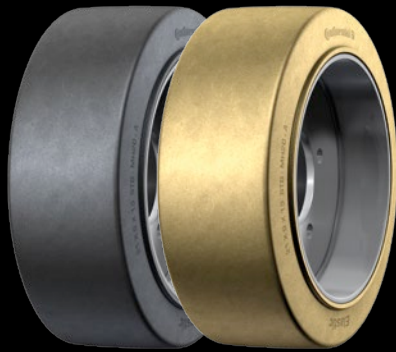
#### MH20

#### Wide Profile Smooth Tread

The Continental MH20's smooth tread provides the longest wearing pattern. Recommended for dry indoor applications for enhanced traction. Its smooth profile resists cutting and chunking and is recommended for steer wheel positions. MH20's larger footprint offers improved load distribution and enhanced stability.

##### Product features

- › Natural rubber construction
- › Low rolling resistance
- › Low heat build up
- › Extended tread life
- › High tilting stability
- › Reduced tread chunking



#### ContiPT18

#### Premium Traction Profile

The ContiPT18 is designed similar to the Continental SC18 Super Elastic resilient tire. With its square shoulder tread pattern, PT18 achieves excellent levels of traction and improved ride quality due to its multi-layer construction.

##### Product features

- › Natural rubber construction
- › Enhanced lug to void ratio
- › Improved wet traction
- › Good cornering stability
- › Excellent shock absorption
- › Low rolling resistance

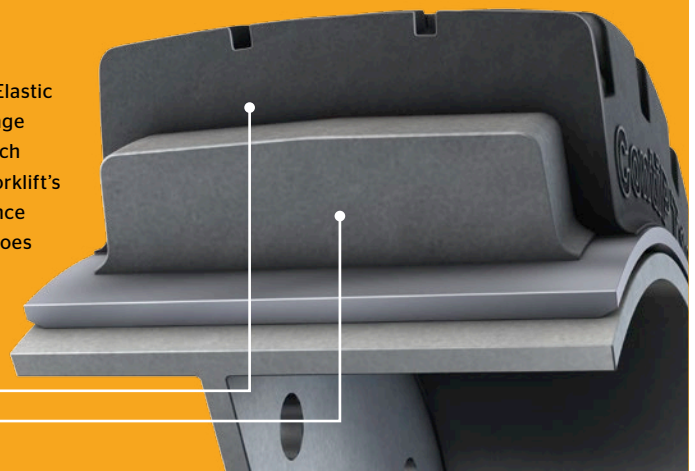


## Press-On-Bands

Continental Specialty Tires is a manufacturer that builds its press-on-band in Standard (Elastic Black) and Clean (Non-Marking) in a 2-stage construction. Instead of offering a single stage wrapped or injection molded press-on-band tire, Continental offers a press-on-band which provides the industry's lowest rolling resistance and longest endurance. The tire is the forklift's only "shock absorber" and Continental provides this needed benefit. Low rolling resistance provides lower energy consumption and lower heat buildup. When a tire runs cooler, it does not abrade as rapidly, allowing for longer tread wear, while minimizing radial cracking and rubber separation at the band.

Continental - Obsessed with Quality!

Cut and Tear Resistant Tread Compound  
Elastic Inner Core



## Tire | Tire load capacity (ETRTO)

Dimensions		Tread	Fork lift trucks at max. speed								Other vehicles at max. speed					
Inch	mm		6 mph   10 km/h				10 mph   16 km/h				4 mph 6 km/h		6 mph 10 km/h		10 mph 16 km/h	
		● MH20 ○ ContiPT18 ○ MC20	Load wheel		Steering wheel		Load wheel		Steering wheel		lbs	kg	lbs	kg	lbs	kg
			lbs	kg	lbs	kg	lbs	kg	lbs	kg	lbs	kg	lbs	kg	lbs	kg
<b>6½"</b>		<b>165 mm</b>														
10x4x6½ *	254/102 - 165	●	1720	780	1411	640	1532	695	1290	585	1720	780	1411	640	1290	585
10x5x6½ *	254/127 - 165	●	2227	1010	1830	830	1995	905	1676	760	2227	1010	1830	830	1676	760
10½x5x6½*	267/127 - 165	●	2370	1075	1951	885	2116	960	1775	805	2370	1075	1951	885	1775	805
<b>8"</b>		<b>203 mm</b>														
12x4½x8 **	305/114-203	●	2292	1040	1895	860	2050	930	1719	780	2292	1040	1895	860	1719	780
13x4½x8	330/114 - 203	●	2469	1120	2028	920	2205	1000	1852	840	2469	1120	2028	920	1852	840
13x5x8	330/127 - 203	○	2844	1290	2337	1060	2535	1150	2127	965	2844	1290	2337	1060	2127	965
13½x5½x8	343/140 - 203	●	3318	1505	2723	1235	2965	1345	2491	1130	3318	1505	2723	1235	2491	1130
14x4½x8	356/114 - 203	●	2579	1170	2116	960	2304	1045	1929	875	2579	1170	2116	960	1929	875
<b>10"</b>		<b>254 mm</b>														
14x5x10	356/127 - 254	●	2943	1335	2414	1095	2635	1195	2105	955	2943	1335	2414	1095	2105	955
15½x6x10	394/152 - 254	○	4123	1870	3373	1530	3671	1665	3086	1400	4123	1870	3373	1530	3086	1400
<b>10½"</b>		<b>267 mm</b>														
16x5x10½	406/127 - 267	● ○	3329	1510	2734	1240	2965	1345	2491	1130	3329	1510	2734	1240	2491	1130
16x6x10½	406/152 - 267	● ○	4222	1915	3461	1570	3770	1710	3164	1435	4222	1915	3461	1570	3164	1435
16x7x10½	406/178 - 267	●	5126	2325	4211	1910	4564	2070	3836	1740	5126	2325	4211	1910	3660	1660
<b>11¼"</b>		<b>286 mm</b>														
15x5x11¼	381/127 - 286	●	3064	1390	2524	1145	2734	1240	2304	1045	3064	1390	2524	1145	2304	1045
16¼x5x11¼	413/127 - 286	●	3362	1525	2756	1250	2998	1360	2524	1145	3362	1525	2756	1250	2524	1145
16¼x6x11¼	413/152 - 286	● ○	4233	1920	3472	1575	3781	1715	3175	1440	4233	1920	3472	1575	3175	1440
16¼x7x11¼	413/178 - 286	●	5104	2315	4189	1900	4553	2065	3825	1735	5104	2315	4189	1900	3825	1735
<b>12½"</b>		<b>308 mm</b>														
18x5x12½	457/127 - 308	●	3627	1645	2976	1350	3230	1465	2712	1230	3627	1645	2976	1350	2712	1230
18x6x12½	457/152 - 308	● ○	4619	2095	3792	1720	4123	1870	3472	1575	4619	2095	3792	1720	3472	1575
18x7x12½	457/178 - 308	● ○	5622	2550	4619	2095	5027	2280	4222	1915	5622	2550	4619	2095	4222	1915
18x8x12½	457/203 - 308	● ○	6625	3005	5445	2470	5919	2685	4971	2255	6625	3005	5445	2470	4971	2255
<b>15"</b>		<b>381 mm</b>														
21x5x15	533/127 - 381	●	4057	1840	3329	1510	3627	1645	3042	1380	4057	1840	3329	1510	3042	1380
21x6x15	533/152 - 381	○	5192	2355	4266	1935	4641	2105	3891	1765	5192	2355	4266	1935	3891	1765
21x7x15	533/178 - 381	● ○	6327	2870	5192	2355	5644	2560	4740	2150	6327	2870	5192	2355	4740	2150
21x8x15	533/203 - 381	● ○	7463	3385	6129	2780	6658	3020	5589	2535	7463	3385	6129	2780	5589	2535
21x9x15	533/229 - 381	● ○	8587	3895	7055	3200	7672	3480	6449	2925	8587	3895	7055	3200	6449	2925
<b>16"</b>		<b>406 mm</b>														
22x6x16	559/152 - 406	●	5379	2440	4420	2005	4806	2180	4034	1830	5379	2440	4420	2005	4034	1830
22x8x16	559/203 - 406	● ○	7727	3505	6349	2880	6900	3130	5787	2625	7727	3505	6349	2880	5787	2625
22x9x16	559/229 - 406	● ○	8896	4035	7308	3315	7948	3605	6669	3025	8896	4035	7308	3315	6669	3025
22x10x16	559/254 - 406	● ○	10075	4570	8267	3750	8995	4080	7551	3425	10075	4570	8267	3750	7551	3425
22x12x16	559/305 - 406	● ○	12412	5630	10196	4625	11089	5030	9315	4225	12412	5630	10196	4625	9315	4225
22x14x16	559/356 - 406	●	14143	6415	12147	5510	13217	5995	11100	5035	14143	6415	12147	5510	11100	5035
22x16x16	559/406 - 406	●	17119	7765	14065	6380	15278	6930	12831	5820	17119	7765	14065	6380	12831	5820
<b>22"</b>		<b>559 mm</b>														
28x10x22	711/254 - 559	●	12037	5460	9899	4490	10759	4880	9039	4100	12037	5460	9899	4490	9039	4100
28x12x22	711/305 - 559	● ○	14859	6740	12214	5540	13272	6020	11133	5050	14859	6740	12214	5540	11133	5050
28x14x22	711/356 - 559	●	17681	8020	14506	6580	15785	7160	13250	6010	17681	8020	14506	6580	13250	6010
28x16x22	711/406 - 559	●	20459	9280	16799	7620	18276	8290	15344	6960	20459	9280	16799	7620	15344	6960
33x14x22	840/356 - 559	●	20062	9100	16413	7445	17461	7920	14330	6500	20062	9100	16413	7445	14330	6500
33x16x22	840/406 - 559	●	24097	10930	19709	8940	20966	9510	17218	7810	24097	10930	19709	8940	15653	7100

\* Single Stage in elastic black compound

\*\* Single Stage compound in Elastic Black and Clean Compound

Additional Metric POB STB Sizes available upon request.