

LET'S GET TO WORK.

EARTHMOVING TIRES

SINCE 1915.
GENERAL TIRE. A BRAND OF CONTINENTAL.

GENERAL TIRE 

WWW.GENERALTIRE-SPECIALTY.COM



GENERAL TIRE

General Tire has over 100 years of experience and expertise in the development and production of tires made specifically for off-the-road applications. The world-renowned brand stands as a trusted partner, while providing a great price-performance-ratio for their tires. For the first time, General Tire offers V.ply technology in their earthmoving tires. This pioneering tire construction technique with the recognizable V-shape casing combines exceptional robustness, stability and efficiency.



THE GENERAL TIRE **V.PLY** TECHNOLOGY

Originally inspired by racing tire design, the innovative V.ply technology enhances the cross-ply technology with multiple cords arranged in a recognizable V-shaped angle. V.ply technology combines extraordinary robustness and tire stability with great rim seat, force transmission and steering response in demanding vehicle operations. Up to 22 layers of high-resistance polymer fiber, precisely aligned in a V-pattern and embedded in up to three wire beads, allow an exceptionally sturdy tire construction. The V.ply technology contributes to extraordinarily strong sidewalls, providing excellent protection against tire punctures and cuts.

Moreover, the powerful construction of V.ply tires improves turning in narrow circles such as in dig and load operations - where tread cracks can be significantly reduced.

This makes General Tire V.ply Earthmoving the right choice for your compact and cost efficient Earthmoving operation cycles. Let's get to work.



EARTHMOVING TIRES

OVERVIEW



TE65

TE191

TE6

DESCRIPTION



LOADER

Low aspect ratio tire for wheel loaders and dozers operating in harsh dig and load operations*



LOADER

Heavy duty wheel loader tire for dig and load operations*



LOADER

Bi-directional tire ideal for compact loader applications*

TREAD CODE

L5

L5

L3

FEATURES



CUT RESISTANCE



ABRASIVE RESISTANCE



IMPACT RESISTANCE



CUT RESISTANCE



ABRASIVE RESISTANCE



IMPACT RESISTANCE



CUT RESISTANCE



ABRASIVE RESISTANCE



IMPACT RESISTANCE

DIMENSIONS

35/65-33 42PR

23.5-25 24PR

26.5-25 26PR

17.5-25 12PR

17.5-25 16PR

TREAD CODES

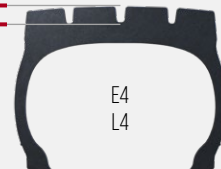
100%



E3/L3
L3
G2
C2

REGULAR TREAD

150%



E4
L4

DEEP TREAD

250%



L5

EXTRA DEEP TREAD



TE188

TE132

TE11

TE95



DUMP TRUCK **SCRAPER** **ADT** **LOADER**

A bi-directional multipurpose earthmoving tire. For use on ADTs, RDTs, loader and scraper.*

E3/L3



DUMP TRUCK

A wide base non-directional tire designed for Dump Trucks in harsh off-the-road conditions.*

E4



GRADER

Rugged tire design primarily used for grading services up to 10km per hour.*

G2



COMPACTOR

Traction tire – primarily developed for all compactor services in road and construction building*

G2



LIFETIME



CUT RESISTANCE



TRACTION



LIFETIME



CUT RESISTANCE



TRACTION



TRACTION



MANEUVERABILITY



DIRECTIONAL STABILITY



TRACTION



DIRECTIONAL STABILITY



CUT RESISTANCE

16.00-25 32PR
20.5-25 16PR
20.5-25 20PR
23.5-25 20PR
23.5-25 24PR
26.5-25 24PR
29.5-25 28PR
37.25-35 42PR

24.00-35 48PR

13.00-24 12PR
14.00-24 12PR

23.1/18-26 10PR

* In order to choose the correct tire for your application & load cycle requirement needs, please do not hesitate to contact our EM solutions team for optimal consultancy.

TE65 // TE191

HEAVY DUTY LOADER TIRES



LOADER



EXTRA DEEP TREAD FOR GOOD CUT PROTECTION AND LONG SERVICE LIFE



OFFSET LUG DESIGN FOR EVEN LOAD DISTRIBUTION AND GOOD BI-DIRECTIONAL TRACTION



TREAD	ARTICLE NO	TIRE SIZE	TREAD CODE	TYPE	PR	LOAD INDEX / SPEED INDEX			RIM
						Transport	Loader	Grader	
TE6	12705350000	17.5-25	L3	TL	12PR		171 / A2		14.00/1.5
	12705370000	17.5-25	L3	TL	16PR		177 / A2		14.00/1.5
TE65	12705320000	35/65-33	L5	TL	42PR		221 / A2		28.00/3.5
TE191	12705330000	23.5-25	L5	TL	24PR		196 / A2		19.5/2.5
	12300750000	26.5-25	L5	TL	26PR		202 / A2		22.00/3.0

TE6

COMPACT LOADER TIRE



LOADER

BI-DIRECTIONAL PATTERN WITH MULTIPLE EDGES FOR GOOD TRACTION



REGULAR TREAD DEPTH FOR LOW HEAT BUILD UP AND GOOD SURFACE INTERACTION



VELTY
TECHNOLOGY

OVERALL DIAMETER		OVERALL WIDTH		STATIC LOADED RADIUS		STATIC LOADED WIDTH		TREAD DEPTH		TIRE WEIGHT		O-RING
mm	inch	mm	inch	mm	inch	mm	inch	mm	inch	kg	lbs	
1.355	53,3	455	17,9	605	23,8	478	18,8	29	36,5	115	254	OR225T
1.355	53,3	455	17,9	605	23,8	478	18,8	29	36,5	127	280	OR225T
2.049	80,7	885	34,8	928	36,5	929	36,6	96	120,9	1.120	2.469	OR333T
1.685	66,3	635	25,0	774	30,5	672	26,4	87	109,6	510	1.124	OR325T
1.782	70,2	693	27,3	808	31,8	728	28,7	101	127,2	638	1.407	OR325T

TE188

MULTI PURPOSE EARTHMOVING TIRE



LOADER



DUMP TRUCK



SCRAPER



ADT



WIDE GROUND PATCH FOR EVEN WEAR AND GOOD SURFACE INTERACTION MEANS LONG SERVICE LIFE



BI-DIRECTIONAL PATTERN WITH MASSIVE BARS PROVIDE MANY GRIPPING EDGES FOR TRACTION ON SOFT AND WET GROUNDS



TREAD	ARTICLE NO	TIRE SIZE	TREAD CODE	TYPE	PR	LOAD INDEX / SPEED INDEX			RIM
						Transport	Loader	Grader	
TE188	12705420000	16.00-25	E3	TL	32PR	177 / B			11.25/2.0
	12705380000	20.5-25	E3/L3	TL	20PR	170 / B	186 / A2		17.00/2.0
	12705390000	20.5-25	E3/L3	TL	16PR	167 / B	181 / A2		17.00/2.0
	12705410000	23.5-25	E3/L3	TL	24PR	180 / B	196 / A2		19.00/2.5
	12705530000	23.5-25	E3/L3	TL	20PR	177 / B	191 / A2		19.00/2.5
	12705440000	26.5-25	E3/L3	TL	24PR	185 / B	200 / A2		22.00/3.0
	12705360000	29.5-25	E3/L3	TL	28PR	193 / B	207 / A2		25.00/3.5
	12705340000	37.25-35	E3/L3	TL	42PR	215 / B	230 / A2		31.00/4.0
TE132	12705400000	24.00-35	E4	TL	48PR	209 / B			17.00/3.5

TE132

DUMP TRUCK TIRE



DUMP TRUCK

TAPERED TREAD DESIGN WITH CENTER RIB FOR IMPACT PROTECTION AND CONTINUOUS GOOD TRACTION



DEEP TREAD AND HIGH WEAR VOLUME FOR CUT RESISTANCE AND LONG SERVICE LIFE



OVERALL DIAMETER		OVERALL WIDTH		STATIC LOADED RADIUS		STATIC LOADED WIDTH		TREAD DEPTH		TIRE WEIGHT		O-RING
mm	inch	mm	inch	mm	inch	mm	inch	mm	inch	kg	lbs	
1.466	57,7	445	17,5	681	26,8	465	18,3	34	42,2	244	538	OR325T
1.518	59,8	516	20,3	671	26,4	550	21,6	32	39,7	196	432	OR325T
1.518	59,8	516	20,3	671	26,4	550	21,6	32	39,7	184	406	OR325T
1.643	64,7	600	23,6	723	28,5	658	25,9	44	55,4	270	595	OR325T
1.643	64,7	600	23,6	723	28,5	658	25,9	44	55,4	266	586	OR325T
1.763	69,4	692	27,2	770	30,3	728	28,7	47	59,2	379	836	OR325T
1.907	75,1	750	29,5	839	33,0	797	31,4	49	61,7	572	1.261	OR325T
2.389	94,1	946	37,2	1.074	42,3	990	39,0	60	75,6	1.091	2.405	OR335T
2.152	84,7	675	26,6	988	38,9	722	28,4	68	85,6	799	1.761	OR335T

TE11



GRADER

HEAVY DUTY TIRE FOR GRADING SERVICES



MANY GRIPPING EDGES
PROVIDE EXCELLENT
DIRECTIONAL TRACTION



MASSIVE TREAD BARS WITH
ROUND SHAPED LUGS RESULT
IN GOOD STABILITY AND
SELF CLEANING



TREAD	ARTICLE NO	TIRE SIZE	TREAD CODE	TYPE	PR	LOAD INDEX / SPEED INDEX			RIM
						Transport	Loader	Grader	
TE11	12705430000	13.00-24	G2	TL	12PR			143 / A8	8.00 TG SDC
	12705450000	14.00-24	G2	TL	12PR			147 / A8	8.00 TG SDC
TE95	12705730000	23.1/18 - 26	C2	TL	10PR			149 / A6	DW20A

TE95



TRACTION TIRE FOR ALL COMPACTOR SERVICES

OPTIMIZED TIRE CONTOUR
ENSURES EVEN PRESSURE
DISTRIBUTION TO KEEP
SURFACES SMOOTH



GEOMETRIC ROBUST TREAD
BLOCKS WITH MULTIPLE EDGES
ENSURE CONTINUOUS TRACTION
PERFORMANCE ON DIFFERING
GROUND CONDITIONS



OVERALL DIAMETER		OVERALL WIDTH		STATIC LOADED RADIUS		STATIC LOADED WIDTH		TREAD DEPTH		TIRE WEIGHT		O-RING
mm	inch	mm	inch	mm	inch	mm	inch	mm	inch	kg	lbs	
1.278	50,3	337	13,3	582	22,9	374	14,7	23	29,0	70	154	OR24T
1.350	53,1	362	14,2	610	24,0	406	16,0	24	30,2	85	187	OR24T
1.560	61,4	595	23,4	703	24,5	619	24,4	24,5	30,9	140	309	-

Continental Reifen Deutschland

Commercial Specialty Tires
Büttnerstraße 25
D-30165 Hannover

T. +49 511 938-01
specialtytires@conti.de
www.generaltire-specialty.com

GENERALTIRE 

WWW.GENERALTIRE-SPECIALTY.COM