



NEW!



ContiRV20 All Season

One tire, four seasons

- › Successful ContiRV20 product family now includes a new companion with extra traction and performance in winter conditions
- › Three rib tread with multiple sipes offer maximum ground contact and traction no matter the weather conditions
- › M+S marking on the sidewall as proven symbol for all season performance

Applications

The ContiRV20 All Season is the ideal tire for small tow tractors and baggage loaders, which operate as part of the ground handling fleet at many airports of the world. No matter if summer or winter conditions, the tire perfectly works on the typical hard and flat airport surfaces and ramps, where it can get slippery when they are wet or are covered in snow or slush (melted wet snow).



Angled pocket sipes

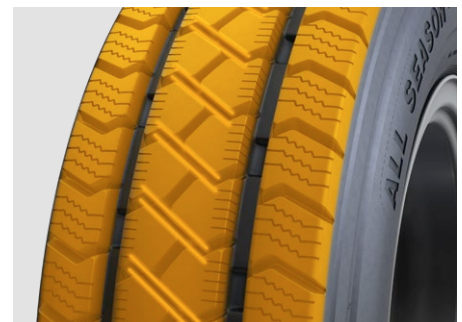
Optimum traction performance and steering capabilities in both summer and winter conditions.

Avoid tire change



High amount of interlocked tread blocks

Increased traction and better braking performance in all weather conditions.



Three ribs and 30° angle of center blocks

High comfort and steering capabilities

ContiRV20 All Season

Rim	Tire size	Ply Rating	Load Index	Speed Index	Tyre Type
16" Rim	225/75 R 16	10	116	A8	TL
16.5" Rim	8.75 R 16.5	12	128	A8	TL