

# ContainerMaster+ The Ultra-Robust Solution

- › Excellent resistance against wear even on high abrasive grounds
- › Highest resistance against tread cracks even while steering in stationary position



## Characteristics

The new Continental Port Plus Compound in combination with the unique V.ply technology makes the Continental ContainerMaster+ a robust all-rounder. Its massive sidewalls mean less tilting, improved protection against damage, and a longer service life. Due to the advanced V.ply design and the ultra-robust Port Plus Compound tread it handles steering in a stationary position much better, reducing tread cracks to a minimum.

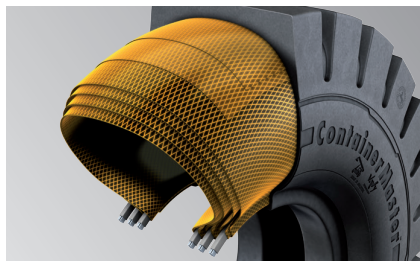
## The new Continental Port Plus Compound

Our new compound contains a special carbon black. This prevents the propagation of microcracks and thus the formation of larger cracks. Our unique synthetic rubber facilitates a strong interaction with the carbon black and is responsible for the exceptionally strong abrasion resistance of the compound.



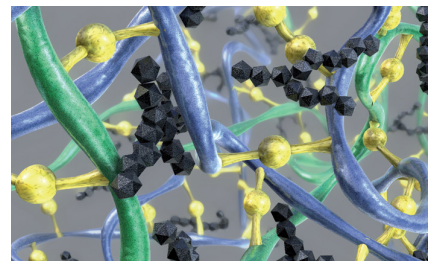
### Massive tread blocks

The massive tread blocks provide highest stability even under extreme conditions



### V.ply for maximum stability

Multiple V.ply layers provide additional rigidity to the tread area and allow the design of utterly strong sidewalls



### Continental Port Plus Compound for maximum robustness

The new Continental Port Plus Compound ensures excellent resistance against wear especially on high abrasive grounds and steering in stationary position

### ContainerMaster+

Actual figures

Tire size	Load index / Speed rating	Tube Type	Rim	Tire width in service (mm)	Tire diameter in service (mm)	Rated pressure (bar)	Tread depth (mm)	ETRTO Tread code*
12.00 - 24	178 / A 5	TT / TL	24 x 5.50 V	335	1285	10	36	Ind-4 (E4)
14.00 - 24	193 / A 5	TT / TL	24 x 10.00 / 1.5	395	1405	10	47	Ind-4 (E4)
16.00 - 25	196 / A 5	TL	25 x 11.25 / 2.0	456	1548	10	56	Ind-4 (E4)
18.00 - 25	207 / A 5	TL	25 x 13.00 / 2.5	515	1694	10	65	Ind-4 (E4)
18.00 - 25	207 / A 5	TL	25 x 13.00 / 2.5	513	1614	10	40	Ind-3 (E3)
18.00 - 33	214 / A 5	TL	33 x 13.00 / 2.5	525	1880	10	65	Ind-4 (E4)

\* ETRTO code new designation (Original designation in brackets)

Specifications are subject to change without notice.

For further technical information, see data sheets.

For details regarding product availability, please contact your local sales representative.