



Trelleborg Elite XP. Premium performance.



Download the App for free



Tire iBrochure

Trelleborg Elite XP. Premium performance.

RESILIENT - MAXIMUM INTENSITY APPLICATIONS

Main Benefits

- Pit stop line**
 Orange line appears when tires need to be replaced.
- Low vibration tread design**
 Prevents driver from feeling vibrations through steering wheel.
- Energy efficiency**
 Low rolling resistance for improved energy efficiency.
- Wear resistant technology**
 Maximum lifetime, reduced downtime, increasing value.
- Energy management system**
 Keeps the internal temperature low ensuring maximum uptime.
- Shock absorbance**
 Tire absorbs shock from obstacles.
- Rim security**
 Rim protection from accidental damage and anti slip bead wires.
- Enhanced stability**
 Faster load positioning and cornering.
- Cut prevention polymer**
 Tire absorbs impact, preventing tire damage.

Polymer Engineering, Application Expertise

As part of our premium range this product is capable of performing in demanding applications to deliver high performance in key areas.



TIRE LIFE



ENERGY EFFICIENCY



COOL RUNNING



STABILITY

Special compounds available

MULTI PURPOSE

CUT RESISTANT MINIMISES CUTS AND TEARS

PRO HD HEAVY DUTY LOAD BONUS

NON MARKING FOR CLEAN FLOORS

CHEMICAL RESISTANT PROTECTION FROM CHEMICALS

PRO ENERGY LOW HEATING RESISTANCE *

ELECTRICALLY CONDUCTING

PRO TEX NON MARKING ELECTRICALLY CONDUCTING *

* Pit Stop Line not available

Polymer Engineering. Application Expertise.

Through polymer engineering and application expertise, Trelleborg strives to deliver optimum performance for all our customers. Tailored for specialist applications and environments, our tires provide innovative solutions for a growing range of industries.

Alongside our premium tire and wheel offering for typical material handling applications, Trelleborg also delivers high performance tires for specialist vehicles operating in demanding environments. Trelleborg's specialist premium compounds are designed to deliver maximum productivity and sustainability, and adhere to compliant safety regulations to keep operators safe.

BUSINESS ACCELERATORS



PRODUCTIVITY



SAFETY



SUSTAINABILITY

Our range of specialist premium tire compounds are divided into two working groups.

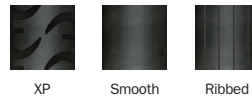
Tires designed for specific jobs		Tires engineered to resist external influence	
ProTEX	Conductive tread compound which prevents electric shock and sparks for non marking indoor applications.	Multi Purpose	Designed to give the best balanced overall performance.
ProENERGY	Cool running tread compound with low hysteresis for electric vehicles.	Non Marking	Designed not to leave black marks on the ground with low rolling resistance and low heat build-up.
ProHD	Increased carrying capacity for overload situations.	Chemical Resistant	Special tread compound with increased chemical resistance to solvents, oil and greasy environments.
Electrically Conducting	Conductive tread compound which prevents electric shock and sparks.	Cut Resistant	Effective on rough, jagged surfaces. Prevents chunking and sidewall damage.

Trelleborg Elite XP

RESILIENT - MAXIMUM INTENSITY APPLICATIONS

Size	Alternative Size	Rim	Alternative Pattern	Tire type & Compound availability ● STD ■ LOC ▼ BOTH								Product Dimensions [mm]		Load Capacity [kg]		
				Multi Purpose	Non Marking	Electrically Conducting	ProTEX**	ProHD*	ProENERGY (HL)	Cut Resistant	Chemical Resistant	Overall Diameter	Section Width	Other	Counterbalanced Lift Trucks up to 25 km/h	
														Static	Load Wheel	Steering Wheel
3.00-4		2.10-4		●	●							252	84	295	260	195
3.00-4		2.50C-4		●	●							252	84	295	260	195
4.00-4		2.50C-4		●	●	●						307	92	625	535	412
4.00-8		3.00D-8		▼	▼	■			●			406	104	1,100	950	730
15x4½-8	125/75-8	3.00D-8		▼	▼	▼	■	▼	▼	■	▼	377	118	1,210	1,040	800
15x4½-8	125/75-8	3.00D-8	Ribbed	▼	●							377	118	1,210	1,040	800
15x4½-8	125/75-8	3.25D-8		●	●							377	118	1,210	1,040	800
5.00-8		3.00D-8		▼	▼	■			●	●	●	457	122	1,650	1,415	1,090
5.00-8		3.75D-8		●	●							457	152	1,740	1,495	1,150
16x6-8	150/75-8	4.33R-8		▼	▼	▼	■	■				411	152	1,740	1,495	1,150
18x7-8	180/70-8	4.33R-8		▼	▼	▼	■	▼	▼	●	▼	456	158	2,490	2,145	1,650
18x7-8	180/70-8	4.33R-8	Smooth	▼	■				▼			456	158	2,490	2,145	1,650
140/55-9	15x5.5-9	4.00E-9		▼	▼	■	■	■			■	380	132	1,360	1,170	900
6.00-9		4.00E-9		▼	▼	▼		▼		●	▼	524	141	2,190	1,885	1,450
6.00-9		4.00E-9	Smooth	▼								524	141	2,190	1,885	1,450
21x8-9	200/75-9	6.00E-9		▼	▼	▼	■	■		▼	■	518	186	3,200	2,755	2,120
6.50-10		5.00F-10		▼	▼	▼		▼	●	●	■	574	160	2,720	2,340	1,800
6.50-10		5.00F-10	Smooth	▼								574	160	2,720	2,340	1,800
180/60-10		5.00F-10		■	■			■				458	157	2,795	2,410	1,850
200/50-10		6.50F-10		▼	▼	▼	■	■				456	197	2,870	2,470	1,900
23x9-10	225/75-10	6.50F-10		▼	▼	▼	■					583	200	4,000	3,445	2,650
7.00-12		5.00S-12		▼	▼	▼		▼	●	●	■	650	172	3,380	2,920	2,240
7.00-12		5.00S-12	Smooth	▼	●							650	172	3,380	2,920	2,240
23x10-12	250/60-12	8.00G-12		▼	▼	▼	■	■	■			583	240	4,380	3,770	2,900
23x10-12	250/60-12	8.00G-12	Smooth	■					▼			583	240	4,380	3,770	2,900
27x10-12	250/75-12	8.00G-12		▼	▼	▼		▼		●		676	240	4,530	3,900	3,000
315/45-12		10.00G-12		■	■				■			572	279	5,210	4,485	3,450
23x5-13		3.75P-13		▼	▼							617	138	1,740	1,495	1,150
5.50-15		4.5-15		●	●							664	143	2,490	2,145	1,650
6.00-15		4.5-15		●	●							694	150	2,720	2,340	1,800
7.00-15	29x8-15	5.5-15		▼	▼	■						730	180	4,115	3,545	2,725
7.00-15	29x8-15	6.0-15		●	●							730	180	4,115	3,545	2,725

TREAD PATTERNS



Size	Alternative Size	Rim	Alternative Pattern	Tire type & Compound availability ● STD ■ LOC ▼ BOTH								Product Dimensions [mm]		Load Capacity [kg]		
				Multi Purpose	Non Marking	Electrically Conducting	ProTEX**	ProHD*	ProENERGY (HL)	Cut Resistant	Chemical Resistant	Overall Diameter	Section Width	Other	Counterbalanced Lift Trucks up to 25 km/h	
														Static	Load Wheel	Steering Wheel
7.50-15		5.5-15		●								745	194	4,530	3,900	3,000
7.50-15		6.0-15		●								745	194	4,530	3,900	3,000
7.50-15		6.5-15		●	●							745	194	4,530	3,900	3,000
8.25-15		5.5-15		●								808	207	5,360	4,615	3,550
8.25-15		6.5-15		▼	▼	▼	■	▼	▼		■	808	207	5,510	4,750	3,650
28x9-15	225/75-15 (8.15-15)	7.0-15		▼	▼	▼			●		■	692	225	4,530	3,900	3,000
250-15	250/70-15	7.0-15		▼	▼	▼	■	▼	●	▼	▼	711	225	5,510	4,745	3,650
250-15	250/70-15	7.5-15		▼	▼	▼		▼		●		712	238	5,510	4,745	3,650
300-15	315/70-15	8.0-15		▼	▼	▼	■	▼	▼	▼	▼	812	255	6,795	5,850	4,500
355/50-15		9.75-15		▼	▼	■					■	710	284	6,610	5,690	4,375
355/65-15	32x12½-15 (350-15)	9.75-15		▼	▼	■		▼	▼			812	284	9,060	7,800	6,000
7.50-16	250/80-16	6.0-16		●	●	●						753	205	4,645	4,000	3,075
7.50-16	250/80-16	6.0-16	Smooth	●								753	205	4,645	4,000	3,075
9.00-20	270/95-20	6.5-20		●								974	220	6,795	5,400	4,500
9.00-20	270/95-20	7.0-20		●	●							974	220	6,795	5,400	4,500
10.00-20	290/95-20	6.5-20		●								1,011	249	7,365	5,850	4,875
10.00-20	290/95-20	7.5-20		●					●	●		1,009	250	7,550	6,000	5,000
10.00-20	290/95-20	7.5-20	Smooth	●					●			1,009	250	7,550	6,000	5,000
10.00-20	290/95-20	8.0-20		●	●				●			1,009	250	7,550	6,000	5,000
11.00-20	300/95-20	8.0-20		●								1,040	260	8,230	6,540	5,450
12.00-20	330/95-20	8.0-20		●	●			●	●			1,090	260	9,515	7,560	6,300
12.00-20	330/95-20	8.0-20	Smooth	●					●			1,090	260	9,515	7,560	6,300
12.00-20	330/95-20	8.5-20		●	●			●	●			1,090	260	9,515	7,560	6,300
12.00-20	330/95-20	10.0-20		●	●	●		●				1,090	313	9,815	7,800	6,500
355/50-20		10.0-20		▼	▼	▼	■	▼				834	310	10,420	8,970	6,900
355/50-20		10.0-20	Smooth	▼	▼				●	■		834	310	10,420	8,970	6,900
12.00-24	330/95-24	8.5-24		●	●			●	●			1,181	295	10,120	8,040	6,700
12.00-24	330/95-24	10.0-24		●	●	●		●	●			1,181	295	11,325	9,000	7,500
14.00-24	385/95-24	10.0-24		●	●			●	●			1,325	331	13,970	11,100	9,250
16.00-25	445/95-25	11.25-25		●	●							1,445	410	18,875	15,000	12,500

* ProHD heavy duty load bonus
 ** ProTEX not currently available with Pit Stop Line



Trelleborg is a world leader in engineered polymer solutions that seal, damp and protect critical applications in demanding environments. Our innovative engineered solutions accelerate performance for customers in a sustainable way. The Trelleborg Group has local presence in over 50 countries around the world.

WWW.TRELLEBORG.COM/WHEELS



facebook.com/Trelleborgmaterialhandling
linkedin.com/company/trelleborgwheelsystems
twitter.com/TrelleborgWheel



Trelleborg Wheel Systems Italia S.p.A.
Via Nazionale Tiburtina, 143 - 00010 Villa Adriana (RM) Italy
Phone: +39 0774 384701 - Fax: +39 0774 384702
www.trelleborg.com/wheels