



SK-900

SK-900 ND

SK-900 & SK-900 ND Skid Steer Loader

PREMIUM PNEUMATIC

The SK-900 premium tire is designed for use in heavyduty applications.

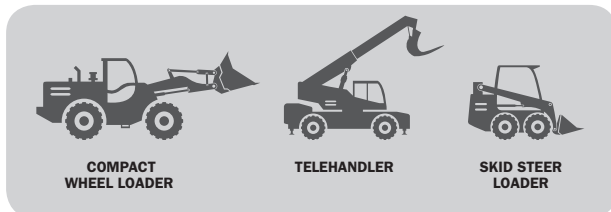
The SK-900 ND (Non-Directional) is designed for maximum performance on concrete, asphalt and other hard surfaces.

These tires have a wide lug tread pattern that provides optimal grip and traction on both smooth and rough surface. The high quality compound promotes maximum tire life and increased cut and chip resistance.

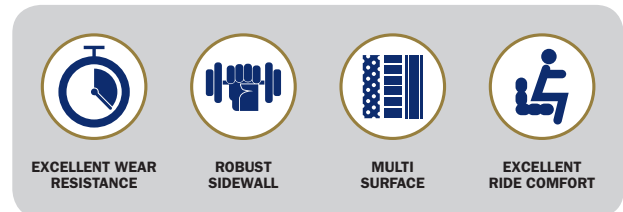
Main Benefits

- Natural rubber
- Extended tire life
- High stability / maximum safety
- Optimal grip and traction

Application



Tire Features



SK-900 Skid Steer Loader

PREMIUM PNEUMATIC

| Tire Size | Alternative Size | Ply Rating | Rim Size | Tire Type | Dimensions [mm] | | | Skid Steer at 10 km/h | |
|---------------------|------------------|------------|------------|-----------|------------------|---------------|-------------|--------------------------|--------------------|
| | | | | | Overall Diameter | Section Width | Tread Depth | Inflation Pressure [bar] | Load Capacity [kg] |
| 23x8.5-12 | | 12 | 7.0-12 | Tubeless | 579 | 213 | 12 | 7.30 | 1,250 |
| 27x10-12 | 250/75-12 | 14 | 8.00G-12 | Tubeless | 690 | 255 | 18 | 7.00 | 3,540 |
| 27x10.5-15 | | 16 | W8.0-15 | Tubeless | 691 | 259 | 13 | 7.10 | 1,800 |
| 29x12.5-15 | | 8 | 10.0-15 | Tubeless | 742 | 310 | 18 | 3.20 | 1,530 |
| 31x15.5-15 | | 8 | 13.0-15 | Tubeless | 792 | 391 | 20 | 3.10 | 1,975 |
| 10-16.5 | | 8 | 8.25-16.5 | Tubeless | 773 | 264 | 19 | 4.10 | 1,880 |
| 10-16.5 | | 10 | 8.25-16.5 | Tubeless | 773 | 264 | 19 | 5.20 | 2,135 |
| 31.5x13-16.5 | | 10 | 9.75-16.5 | Tubeless | 790 | 326 | 20 | 4.90 | 2,575 |
| 12-16.5 | | 10 | 9.75-16.5 | Tubeless | 831 | 307 | 17 | 4.50 | 2,540 |
| 12-16.5 | | 12 | 9.75-16.5 | Tubeless | 831 | 307 | 17 | 5.50 | 2,865 |
| 14-17.5 | | 14 | 10.50-17.5 | Tubeless | 921 | 349 | 22 | 5.50 | 3,875 |
| 15-19.5 | | 14 | 11.75-19.5 | Tubeless | 1,019 | 389 | 22 | 4.80 | 4,565 |

SK-900 ND Skid Steer Loader

PREMIUM PNEUMATIC

| Tire Size | Ply Rating | Rim Size | Tire Type | Dimensions [mm] | | | Skid Steer at 10 km/h | |
|----------------|------------|-----------|-----------|------------------|---------------|-------------|--------------------------|--------------------|
| | | | | Overall Diameter | Section Width | Tread Depth | Inflation Pressure [bar] | Load Capacity [kg] |
| 10-16.5 | 10 | 8.25-16.5 | Tubeless | 773 | 264 | 27 | 5.20 | 2,135 |
| 12-16.5 | 12 | 9.75-16.5 | Tubeless | 831 | 307 | 33 | 5.50 | 2,865 |



Trelleborg Wheel Systems Italia S.p.A.
Via Nazionale Tiburtina, 143 - 00010 Villa Adriana (RM) Italy
Phone: +39 0774 384701 - Fax: +39 0774 384702
www.trelleborg.com/wheels

facebook.com/TrelleborgConstruction
youtube.com/TrelleborgConstruction



Download the App for free

