



HD Solidflex  
Traction

HD Solidflex  
Smooth

HD  
Traction

HD  
Smooth

# Brawler HD Skid Steer

## PREMIUM SOLID

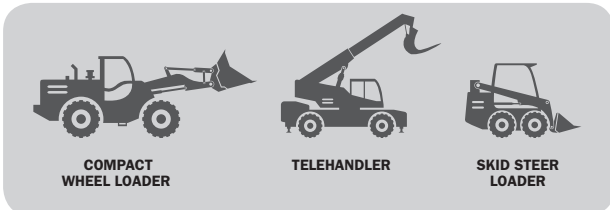
Brawler Skid Steer tires are designed to eliminate downtime and provide superior vehicle performance in severe-duty applications. They feature an enhanced rubber compound designed for greater resistance to cutting and chunking. Trelleborg manufactures Solidflex tires that feature elliptical apertures and HD tires that are aperture free.

Installation of the HD Skid Steer is simple. No pressing is required - the tire features a built-in wheel that simply bolts on. The Brawler Skid Steer is constructed using a premium mining rubber compound that is abrasion and chunk resistant. The Brawler Solidflex is also available in a Non-Marking compound.

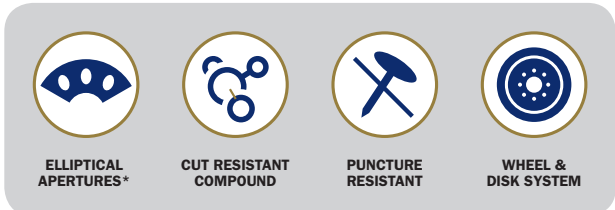
### Main Benefits

- Durable cut-resistant rubber compound eliminates downtime caused by flats and sidewall cuts
- No specialized equipment required to install
- Passed the rigorous testing of OEMs

### Application



### Tire Features



\*only available with Solidflex tires

# Brawler HD Skid Steer

PREMIUM SOLID

## HD SOLIDFLEX TRACTION

Tire Size	Pneumatic Equivalent Size	Overall Diameter [mm]	Section Width [mm]	Rubber Thickness [mm]	Tread Depth [mm]	Load Capacity 10 km/h [kg]
31x6x10	10-16.5	785	254	158	48	3,000
33x6x11	12-16.5	840	279	155	61	3,600
36x7x11	14-17.5	915	279	168	71	3,885

## HD SOLIDFLEX SMOOTH

Tire Size	Pneumatic Equivalent Size	Overall Diameter [mm]	Section Width [mm]	Rubber Thickness [mm]	Tread Depth [mm]	Load Capacity 10 km/h [kg]
31x5x9	10-16.5	785	229	131	48	2,690
33x6x8	8-16	840	203	156	61	2,500
33x6x10	12-16.5	840	254	156	61	3,340

## HD TRACTION

Tire Size	Pneumatic Equivalent Size	Overall Diameter [mm]	Section Width [mm]	Rubber Thickness [mm]	Tread Depth [mm]	Load Capacity 10 km/h [kg]
31x5x7	7.50-16	785	178	131	38	2,460
31x5x8	10-16.5	785	229	131	38	3,290
33x6x8	8-16	840	203	156	46	2,875
33x6x10	12-16.5	840	254	156	46	3,705

## HD SMOOTH

Tire Size	Pneumatic Equivalent Size	Overall Diameter [mm]	Section Width [mm]	Rubber Thickness [mm]	Tread Depth [mm]	Load Capacity 10 km/h [kg]
31x5x7	7.50-16	785	178	131	48	2,460
31x5x9	10-16.5	785	229	131	48	3,290
33x6x8	8-16	840	203	156	61	2,875
33x6x10	12-16.5	840	254	156	61	3,705
36x7x11	14-17.5	915	279	169	117	4,245



Trelleborg Wheel Systems Italia S.p.A.  
Via Nazionale Tiburtina, 143 - 00010 Villa Adriana (RM) Italy  
Phone: +39 0774 384701 - Fax: +39 0774 384702  
[www.trelleborg.com/wheels](http://www.trelleborg.com/wheels)



[facebook.com/TrelleborgConstruction](https://facebook.com/TrelleborgConstruction)  
[youtube.com/TrelleborgConstruction](https://youtube.com/TrelleborgConstruction)



Download the App for free

