

# Stellana Rmax™

## Press on Tires

Suitable POB tires that are constructed out of high-quality natural rubber that is bonded to a steel band.

### Stellana Rmax Key Attributes:

- Smooth and Traction
- Non-marking Versions
- Turn Assist Profile
- Low Heat Buildup
- Reduce Chunk and Tear

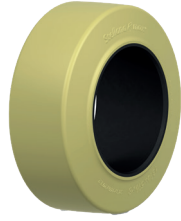


## Stellana Rmax™ Tire Options



### Smooth

TAP design promotes ease of turning with lateral stability while reducing driver fatigue.



### Smooth Non-Marking

This compound will not scuff and leave undesirable markings on floor surfaces.



### Traction

High performance compound with non lugged profile provides exceptional traction with long wear life.



### Traction Non-Marking

Aggressive tread design provides exceptional traction in clean environments.

## Stellana Rmax™ Tire Sizes and Load Capacity

Tyre Size			Load Capacity									
			Counter Balanced Lift Trucks								Other Vehicles	
	In Inch	In Metric	Up to 10 km/h (6 mph)		Up to 16 km/h (10 mph)		Up to 16 km/h (10 mph)		Up to 16 km/h (10 mph)		Up to 16 km/h (10 mph)	
			Load Wheels	Steer Wheels	Load Wheels	Steer Wheels	Load Wheels	Steer Wheels	Kg	Lbs	Kg	Lbs
			Kg	Lbs	Kg	Lbs	Kg	Lbs	Kg	Lbs	Kg	Lbs
1	10x4x6 1/2	254x102x165	780	1720	640	1411	695	1532	585	1290	555	1224
2	10x4 3/4x6 1/2	254x121x165	950	2095	780	1720	845	1863	710	1566	675	1488
3	10x5x6 1/2	254x127x165	1010	2227	830	1830	905	1996	760	1676	725	1599
4	12x4 1/2x8	305x114x203	1040	2293	855	1885	930	2051	780	1720	745	1643
5	12x5 1/2x8	305x140x203	1340	2955	1100	2426	1195	2635	1005	2216	955	2106
6	13 1/2x5 1/2x8	343x140x203	1510	3330	1240	2734	1345	2966	1130	2492	1080	2381
7	14x4 1/2x8	356x114x203	1170	2580	960	2117	1045	2304	875	1929	830	1830
8	14x5x10	356x127x254	1335	2944	1095	2414	1195	2635	1000	2205	955	2106
9	15x5x11 1/4	381x127x286	1390	3065	1140	2514	1240	2734	1040	2293	990	2183
10	16x5x10 1/2	406x127x267	1510	3330	1240	2734	1345	2966	1130	2492	1080	2381
11	16x6x10 1/2	406x152x267	1910	4212	1570	3462	1710	3771	1435	3164	1360	2999
12	16x7x10 1/2	406x178x267	2325	5127	1910	4212	2070	4564	1740	3837	1660	3660
13	16 1/4x5x11 1/4	413x127x286	1530	3374	1250	2756	1360	2999	1145	2525	1090	2403
14	16 1/4x6x11 1/4	413x152x286	1920	4234	1580	3484	1715	3782	1440	3175	1370	3021
15	16 1/4x7x11 1/4	413x178x286	2325	5127	1900	4190	2060	4542	1735	3826	1650	3638
16	18x5x12 1/8	457x127x308	1640	3616	1350	2977	1470	3241	1230	2712	1170	2580
17	18x6x12 1/8	457x152x308	2100	4631	1720	3793	1870	4123	1575	3473	1500	3308
18	18x7x12 1/8	457x178x308	2550	5623	2100	4631	2280	5027	1910	4212	1820	4013
19	18x8x12 1/8	457x203x308	3000	6615	2475	5457	2680	5909	2250	4961	2150	4741
20	21x6x15	533x152x381	2350	5182	1930	4256	2100	4631	1765	3892	1680	3704
21	21x7x15	533x178x381	2875	6339	2350	5182	2560	5645	2150	4741	2050	4520
22	21x8x15	533x203x381	3375	7442	2775	6119	3025	6670	2540	5601	2425	5347
23	21x9x15	533x229x381	3900	8600	3200	7056	3475	7662	2920	6439	2775	6119
24	22x8x16	559x203x406	3500	7718	2875	6339	3130	6902	2625	5788	2500	5513
25	22x9x16	559x229x406	4050	8930	3325	7332	3600	7938	3025	6670	2875	6339
26	22x10x16	559x254x406	4575	10088	3750	8269	4080	8996	3425	7552	3250	7166
27	22x12x16	559x305x406	5625	12403	4625	10198	5030	11091	4225	9316	4025	8875
28	28x12x22	711x305x559	6740	14862	5540	12216	6020	13274	5060	11157	4820	10628
29	16x8.66x12	405x220x305	2760	6086	2265	4994	2465	5435	2070	4564	1970	4344